

iQ / iQ Pro series



The intelligent projector for information sharing and collaboration



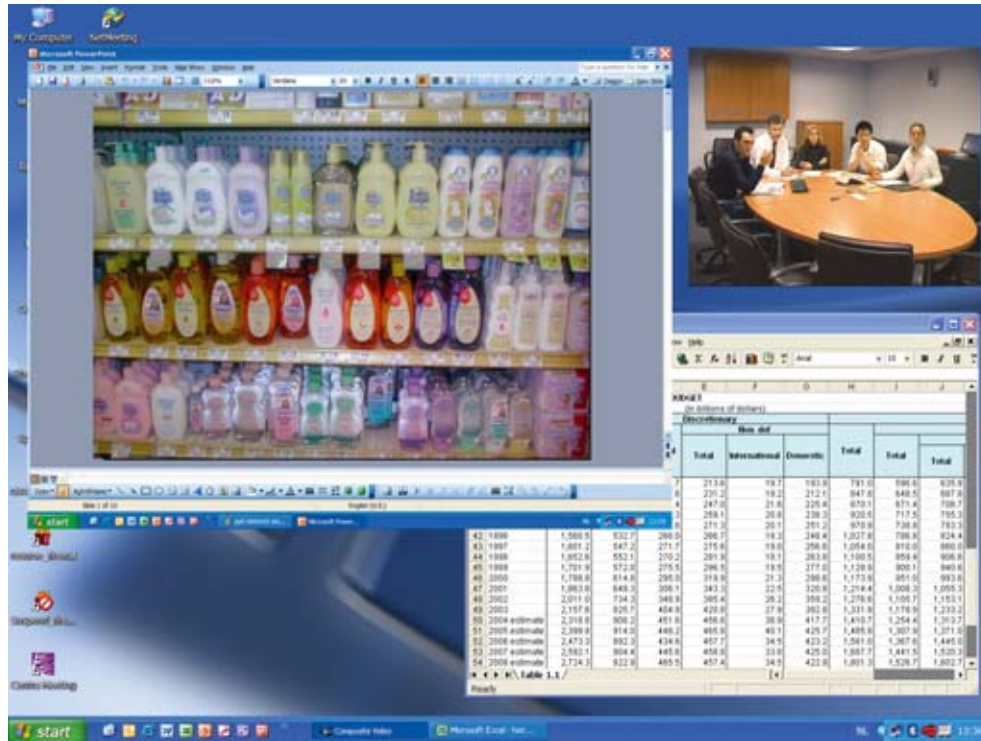
- 5,000 ANSI lumens (adjustable to 3,500 for increased life)
- Excellent resolution: XGA (1024 x 768)/SXGA+ (1400 x 1050)
- High-contrast level: 800:1
- Advanced picture-in-picture
- Powerful integrated computer server
- Intelligent, network-centric operation
- Innovative dual-lamp system
- Low cost of ownership

BARCO

Visibly yours

Intelligent technology that's engineered to

No other presentation system on the market today comes close to the Barco iQ/iQ Pro series of high-performance projectors. The iQ/iQ Pro series offers unparalleled image quality, outstanding reliability, built-in intelligence, and advanced network-centric operation. From reception areas over executive board rooms to training rooms, auditoriums, and remote meeting locations, the iQ/iQ Pro series has a proven track record of performing in the most intensive environments and providing long-lasting operation. That's why time and time again organizations large and small turn to the Barco iQ/iQ Pro series for their professional presentation needs. See for yourself what makes the iQ/iQ Pro series so much better than other presentation systems.



Unparalleled image quality

The iQ/iQ Pro series projectors combine high-quality 1.4" poly-silicon LCD technology and Barco's renowned image processing expertise for unsurpassed image quality. State-of-the-art optics ensure a high contrast level of more than 800:1 for razor-sharp clarity in every portion of the projected image.

With the iQ/iQ Pro series, you can choose between super high-quality resolution SXGA+ or XGA models, depending on your presentation needs. Barco's patented True Color Reproduction (TCR^{plus}) software enhances the quality of conventional image sources to produce vibrant images with remarkable color depth, sharpness, and clarity. Barco's exceptional tuning facilities, result in remarkable color uniformity.

Choose the brightness you need

Depending on your application, your iQ projector can be set to operate at its highest or at a reduced brightness. During the first 100 operation hours of the lamp, you can choose between the following operation modes:

- **Full Power Mode:** the iQ will operate at 5,000 ANSI lumens (in dual lamp mode) with a 1500-hour lamp system lifetime.
- **Adjustable Light Output Mode (ALO):** the iQ will operate at 3,500 ANSI lumens (in dual lamp mode) with a 3,000-hour lamp system lifetime.

Switching to single-lamp mode means doubling the lamp system lifetime (6,000 hours in ALO).

perform, impress, and last

Easy and intuitive operation using Windows XP Pro

The **desktop integration** of the iQ Pro series truly sets it apart from any other projection system. This function allows you to choose sources and manage source windows from within the iQ Pro's Windows™ XP Pro desktop. There is no need for a traditional remote control, just use the mouse and keyboard. The iQ Pro's desktop remains visible as a full screen backdrop, with freely positional windows on top showing other video and data sources. Window layouts can be easily saved and recalled.

Display multiple sources simultaneously
Efficient decision making means exchanging and retrieving information in a fast and efficient way. The **advanced picture-in-picture** functionality of the iQ/iQ Pro series enables you to display up to 3 source windows simultaneously (two data and one video image), so data can be easily compared. You can freely position and scale source windows for optimal impact.

You can even **digitally zoom** inside a source window and scroll for the details you want to emphasize.

The iQ/iQ Pro series also allows you to **switch sources instantly** and apply special effects for smooth, professional transitions.



Intelligent network-centric projection

You'll never view network communications the same after you integrate the iQ Pro series projectors into your network infrastructure. The iQ Pro series features a **built-in powerful, Pentium M-based server** that can be easily connected to the user's network. There is no need to bring your laptop to the meeting; you can send any file in any format over the network to the projector.



Immediate access to all sources and files through the familiar Windows™ XP interface, by simply using mouse and keyboard.



Barco's Proximity Desktop allows streaming your desktop and video over LAN to the projection screen.

The iQ Pro's DropZone feature lets you drag & drop any file from your laptop, straight on to the projector, over the LAN. Frequently used presentations can be saved on the projector's integrated server for fast retrieval.



DATA OR MEDIA SERVER



Efficient multi-site collaboration

Meetings in multiple sites can be visually linked, sharing the same content on a large screen. Files can be transferred to the projector in the meeting room from any networked location. From any networked location, a presenter can take control of the presentation and the projector to do his part of the presentation or to interact with the content on display. Easy interaction by all participants leads to fast and accurate decision making.



Cost-effective, centralized fleet management

The integrated server on the iQ Pro series gives your AV facility manager the ability to fully control and diagnose a fleet of projectors from a central location. There is no need for support staff to run to meeting rooms to adjust projector settings. These adjustments can be made remotely, over the network, right from their desks. To improve maintenance support, you can remotely monitor projector and lamp status and adjust settings as necessary. The iQ Pro series projectors can also send emails to inform the Help desk of any potential problems or need for lamp changes.

Connect any peripheral for true multi-source presentations

The iQ/iQ Pro series projectors have a broad array of input and output connections for seamless integration in your system. The iQ/iQ Pro series are fully interoperable with traditional Pro-AV control systems. As simple fixed installed products or fully integrated systems, the iQ is flexible enough for any environment.

The iQ series comes standard with following connections: all RGB configurations, D15 connection, Composite Video, S-Video, Component Video and DVI. Both the iQ and iQ Pro series display an extremely wide range of signals, including analog data to digital video and from the latest HDTV sources to all of today's popular RGB computer formats. In addition to the RGB and video sources mentioned above, the iQ Pro comes with a powerful integrated computer server with PCMCIA slot, USB, LAN, and audio connections for unlimited connectivity. All connections are located in the cable basket on the projector's front panel for easy access.

iQ



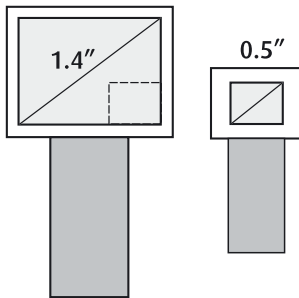
iQ Pro



Designed for reliability and long life

Large diagonal LCD panels provide longer lifetime

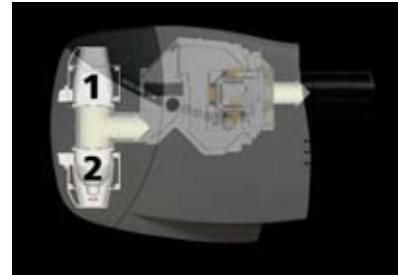
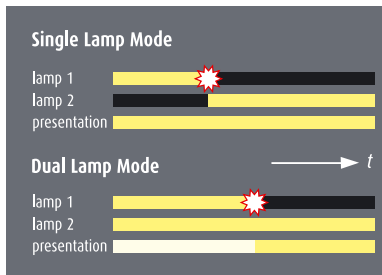
Consumer oriented LCD projectors mostly feature small LCD panels with a diagonal size ranging from 0.5" to 1.0". When used in a high brightness projection device, their tiny surface has to endure very high light intensities making the LCD panel prone to fast degradation. The iQ/iQ Pro series projectors feature professional 1.4" diagonal LCD panels, designed for bright, long-lasting performance.



Intelligent dual-lamp system maximizes light efficiency

All iQ/iQ Pro series projectors come with an advanced dual-lamp system, providing guaranteed uninterrupted presentations.

Should one lamp fail, the innovative auto-sensing feature instantly switches to the other lamp.



For applications where less light output is required, switch to single-lamp mode and double the lifetime of the lamp system.

In addition, the iQ projector lamps alternate intelligently in order to reach end-of-life simultaneously. This allows you to replace both lamps at the same time.



Lamps take only seconds to replace with our innovative click & plug-in concept. No special tools are required.



Technical specifications

	iQ G500	iQ R500	iQ Pro G500	iQ Pro R500
Light output	5,000 ANSI lumens in Full Power mode / 3,500 ANSI lumens in Adjustable Light Output (ALO) mode			
Native resolution (pixels)	1,024 x 768	1,400 x 1,050	1,024 x 768	1,400 x 1,050
Input compatibility (up to)	1,600 x 1,200			
Contrast ratio	> 800:1 (full white/full black on full field)			
Brightness uniformity	> 95%			
Lamp power	2 x 250 W			
Lamp lifetime (typical)	3,000 Hrs (ALO mode) / 1,500 Hrs (Full Power mode)			
Lamp set lifetime (max)	6,000 Hrs (ALO mode) / 3,000 Hrs (Full Power mode) (in single lamp mode)			
Operating noise	< 37dBA (ALO mode) / < 38dBA (Full Power mode)			
Vertical lens shift	-30% +110%			
Integrated server platform	n.a.			Pentium M 1.6 GHz processor, 512 MB RAM, 40 GB hard disk, Microsoft™ XP Multi-language OS installed, incl. Barco server software for network communication between iQ Pro server and clients

LCD panels

3 x 1.4" diagonal polysilicon LCD panels

Scan frequencies

Horizontal: 15 kHz - 110 kHz

Vertical: 25 Hz - 150 Hz

Special features

- AUTOLMAGE
- Advanced picture-in-picture
- Seamless switching with effects
- Standard cable basket
- Standard light shutter
- Advanced digital zoom

Inputs

1x configurable 5-Wire (BNC) for composite video, S-video, component video, RGBHV, RGBS, RGSB

1x composite video (BNC) (up to 7x via BNCs)

1x S-video (4-pin mini-DIN) (up to 3x via BNCs)

1x VGA (D15 connector)

1x DVI (Digital Visual Interface)

Audio connections on iQ G500/R500:

stereo mic in, stereo line in & line out

Communication

1x D9 connectors for RS232 In/Out

1x spherical IR receiver

1x mini-jack for wired remote

Compatibility

- All current video sources (PAL, SECAM, NTSC) in Composite, S-video, Component or RGB formats
- HDTV standards: 1080i, 720p
- All computer graphics formats from VGA, S-VGA, XGA, S-XGA, and U-XGA (75 Hz)
- Apple computer formats up to 1600 x 1200
- DVI sources up to SXGA+

Max. power consumption

iQ G500/R500: 620 Watt

iQ Pro G500/R500: 650 Watt

AC power

Power factor pre-regulated SMPS, 90-254 VAC/50-60Hz

Safety regulations

Compliant with UL1950 and EN60950

Electromagnetic interference

Barco's iQ (Pro) series comply with FCC rules & regulations, part 15 Class B, CE EN55022 Class B and CCC

Weight

Net weight, body only:

iQ G500/R500 12.9 kg / 28.5 lbs.

iQ Pro G500/R500 13.5 kg / 29.8 lbs.

Dimensions

	mm	inch
Length ⁽¹⁾	590	23.23
Width	415	16.34
Height	195	7.68

(1) with QVD (1.9 - 2.6:1) zoomlens

Available lenses

Lens Type	Order N°.
Motorized Zoom Lenses:	
QVD (1.3 - 1.8:1)	R9840950
QVD (1.9 - 2.6:1)	R9840960
QVD (3.0 - 6.0:1)	R9840970
Fixed Focal Length Lenses:	
QVD (0.85:1) incl. rear screen optimization	Ropt1925
QVD (7.0:1)	R9841230

Order information

BARCO iQ G500	R9002930
BARCO iQ Pro G500	R9003081
BARCO iQ R500	R9010160
BARCO iQ Pro R500	R9010221

Replacement lamp 250 Watt	R9841761
Dual lamp package	R9841760
Ceiling mount	R9841250
Ceiling mount bar short	R9841260
Ceiling mount bar long	R9841261
Flight case	R9841300
SDI input board	R9841320
Audio switching & video input board	R9841330
Factory fitted SDI board	Ropt1857
Factory fitted audio & video board	Ropt1858

Ref no. R599118 November 2006



Barco's Presentation & Simulation division is ISO 9001 certified.

iQ™ is a registered trademark of Barco.

Windows™ is a registered trademark of Microsoft Corporation.

The information and data given are typical for the equipment described.

However any individual item is subject to change without any notice.

The latest version of this product sheet can be found on www.barco.com/presentation



Barco nv, Presentation & Simulation division
 Noordlaan 5, B-8520 Kuurne - Belgium
 Tel. +32 56 36 82 11 - Fax +32 56 36 85 26
 email: info.presentation@barco.com

Barco Visual Solutions, LLC
 3059 Premiere Parkway
 Duluth, GA 30097-4905
 Tel. +1 678 475 8000 - Fax +1 678 475 8100
 email: BPSmarketing@barco.com

BARCO

Visibly yours